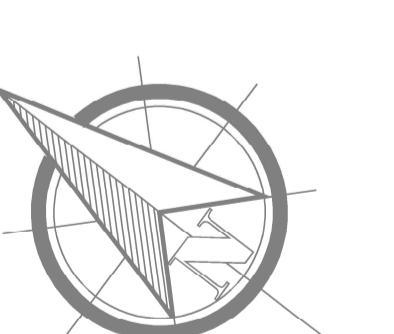
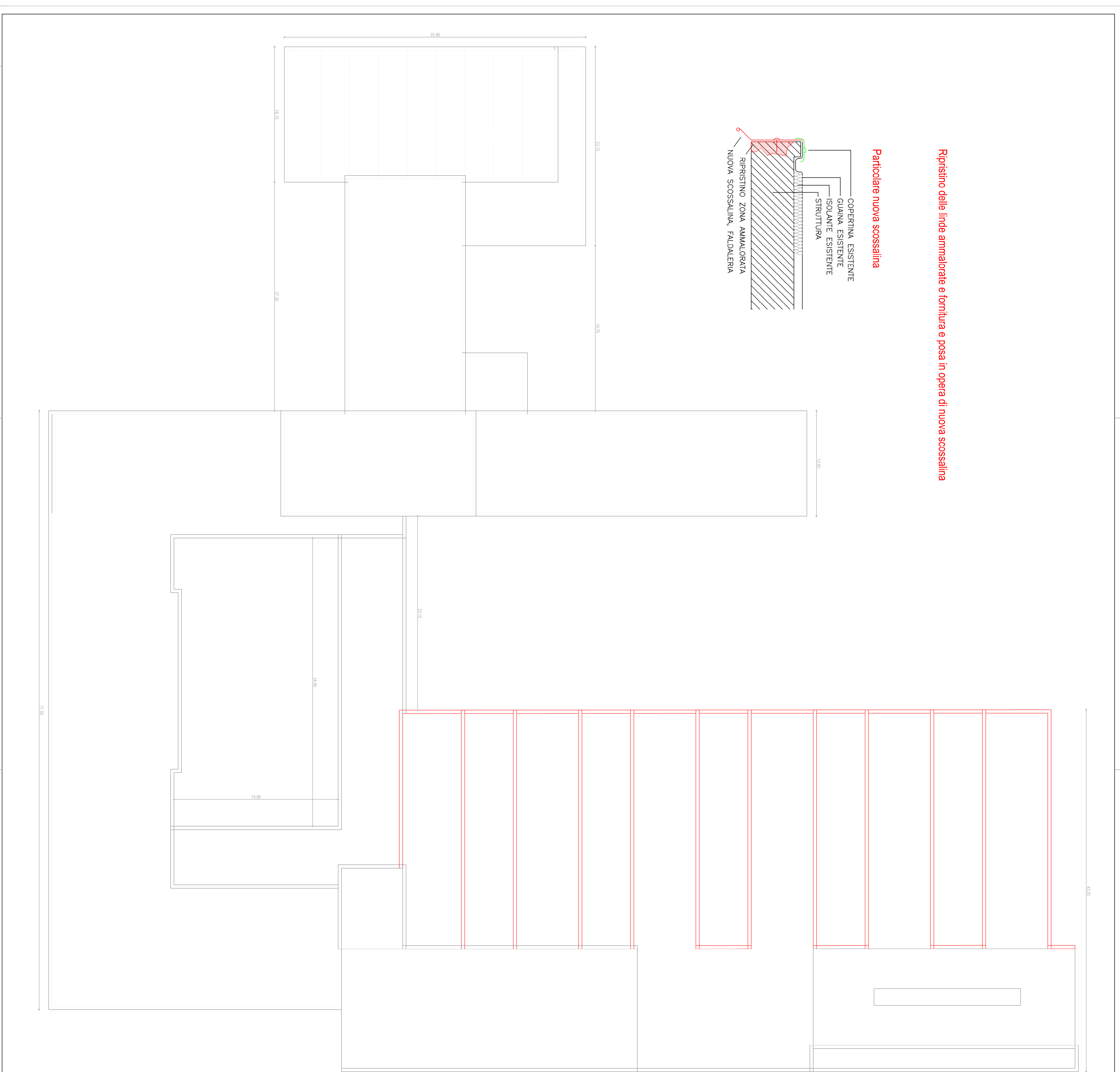
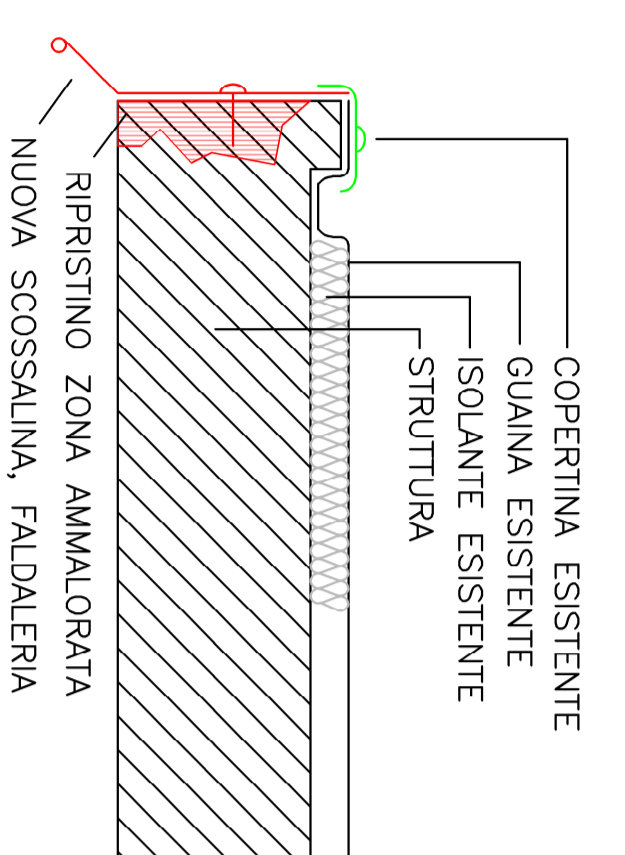
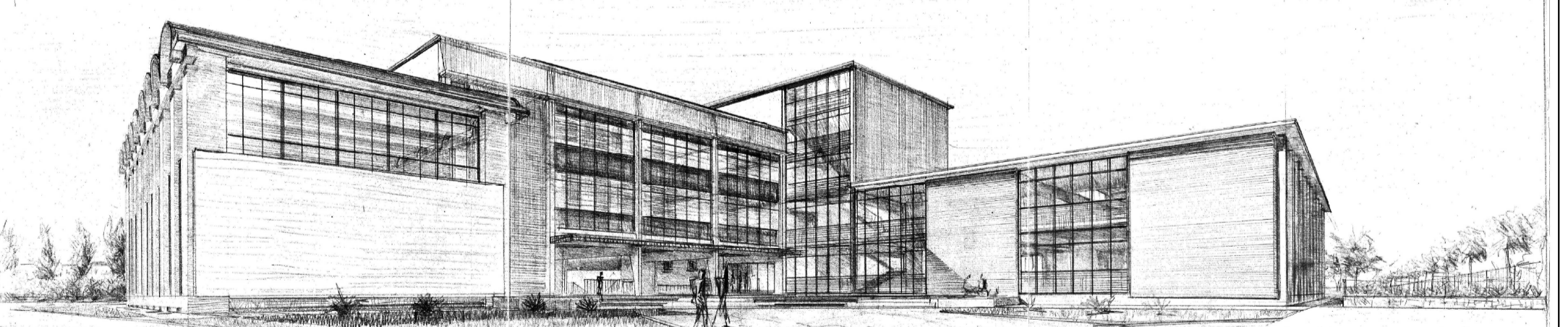





Ripristino delle lince ammalorate e fornitura e posa in opera di nuova scossalina

Particolate nuova scossalina



	
	REGIONE AUTONOMA FRIULI VENEZIA GIULIA
	PROVINCIA DI GORIZIA
	DIREZIONE LAVORI E MOBILITA'
I.P.I. "G. GALILEI" manutenzione straordinaria delle facciate e sostituzione serramenti	
PROGETTO DEFINITIVO – ESECUTIVO	
STATO DI PROGETTO PIANTA COPERTURA fase 1	scala 1:200
REDATTO DA: Ing. Giuseppe SERRAVALLE Ing. Roberto ZAPPALÀ Ing. Antonio FALDORE	
RESPONSABILE DEL PROCEDIMENTO: Ing. F. Fabio CIRCI	
III DIREZIONE Arch. Sara CASARÉ	
Gorizia, 03/2017	Fav. n. 04a