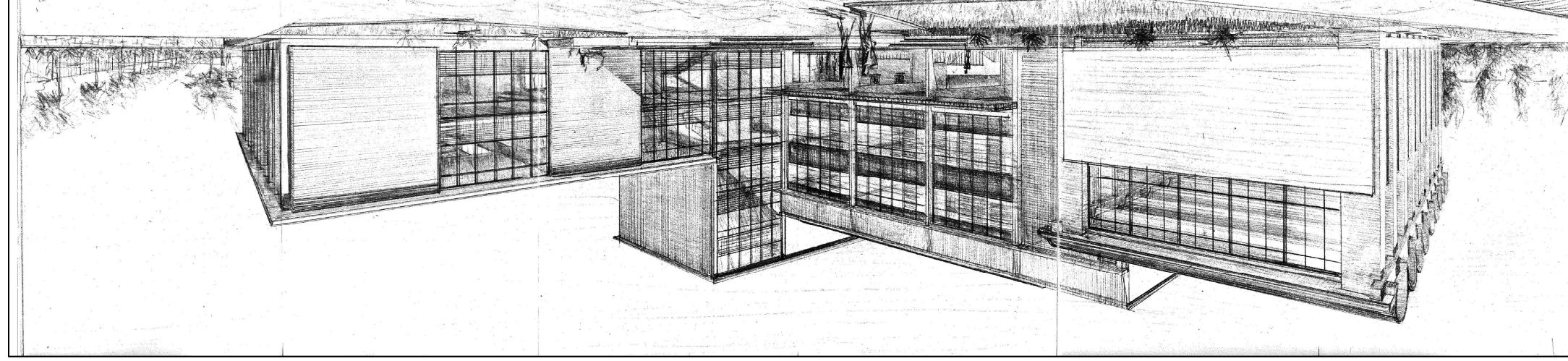
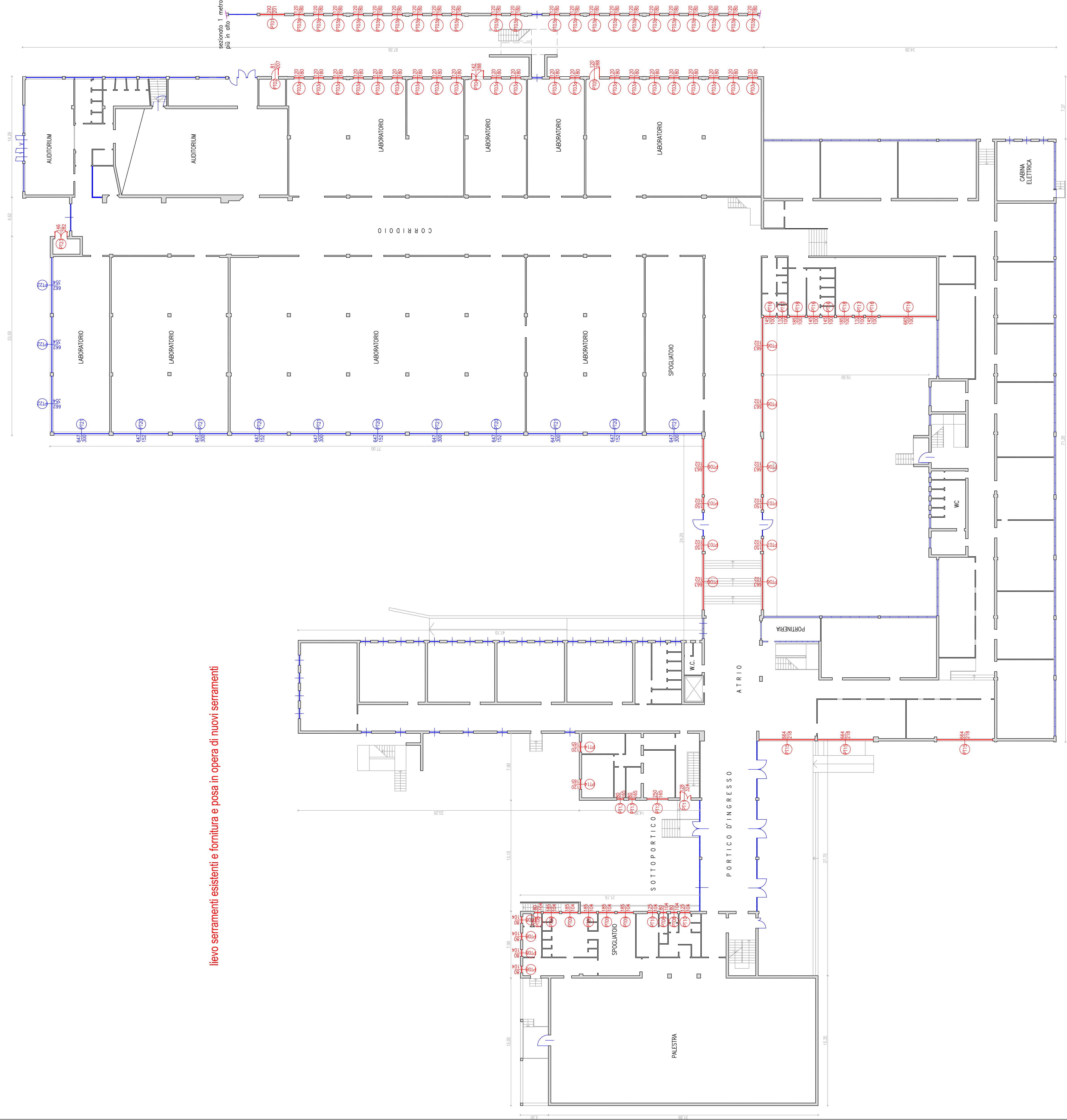


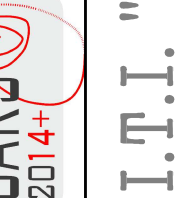



lievo serramenti esistenti e fornitura e posa in opera di nuovi serramenti



 REGIONE AUTONOMA FRIULI VENEZIA GIULIA	 PROVINCIA DI GORIZIA	 DIREZIONE LAVORI E MOBILITÀ
 CARS 2014	I.T.I. "G. GALILEI" manutenzione straordinaria delle facciate e sostituzione serramenti	
PROGETTO DEFINITIVO – ESECUTIVO		
STATO DI PROGETTO PIANTA PIANO TERRA fase 2		
scala 1:200		
REDAATTO DA: ing. Giordano SCARAUZZA ing. Jr. Fabio CURCI geom. Lorenzo FOLADORE		
RESPONSABILE DEL PROCEDIMENTO: ing. Jr. Fabio CURCI		
IL DIRIGENTE: arch. Lara CARLIOT		
Gorizia.		